

TETRAL INVERSE
on T-grid

INVERSE on T-grid is the inverse solution of Tetral 15 ceiling systems, made up modular panels laid into a 15 or 24 mm. T-grid. Thanks to its "Π" shaped inverse profiles, 15 mm. wide, INVERSE on T-grid provides the best solution between functional and decorative purposes.
A simple solution for high style projects.

FEATURES

INVERSE on T-grid features 600x600 mm modular panels, made up of "Π" - shaped blades 15 mm base and 40 mm height, which suitably coupled form a square cell.
Cell sizes are available from 86x86 mm up to 150x150 mm.

The profiles are made by BENDING SYSTEM, which gives: the accuracy of profiles, more square edges and blades perfectly straight.

INVERSE on T-grid can be supplied either plain or perforated, to achieve aesthetic and acoustic requirements. Standard perforation patterns are as follows:

hole 1,50 mm, 22% free opening, 3 mm pitch
hole 2,50 mm, 19% free opening, 5 mm pitch.

The inner and outer of blades can be of same colour, or in different colours for every decorative purpose.

Standard finishes:

inner blue RAL 5012 and outer silver RAL 9006
inner natural aluminium and outer black RAL 9005.

SUPPLY FORM

INVERSE on T-grid is usually supplied unassembled. It allows for easier packages and more economic transports. Upon request, the panels can also be supplied assembled.

FIRE REACTION

Ceir open ceiling are classified "un-combustible", in compliance with international standards.

INSTALLATION

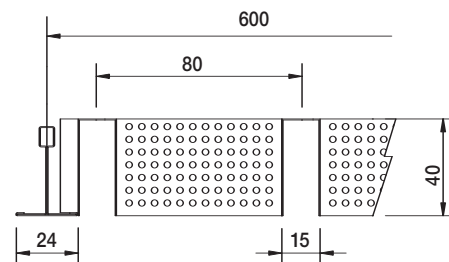
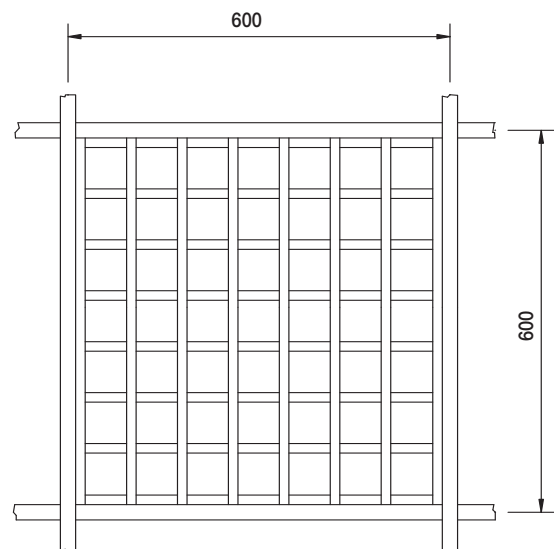
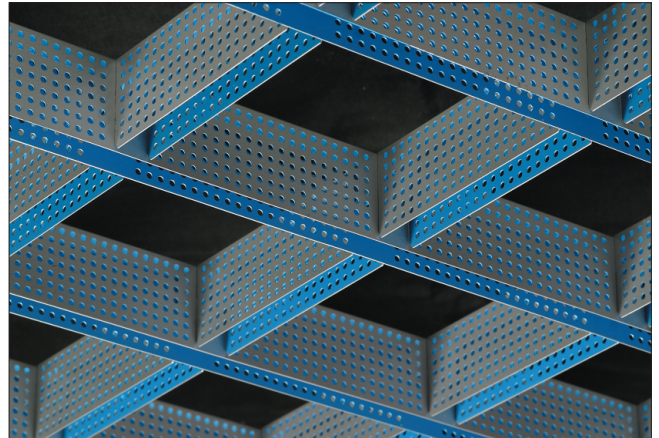
Specifically designed to fit into the standard suspension grid formed by T15 or T24 mm. profiles, INVERSE provides:

- a trackless appearance of the ceiling,
- an high decorative effect. Actually, when the panel is laid into the suspension grid, the structure results fully integrated in the cell ceiling and just the Tprofile points out the modular panels 600x600 mm.

The standard finishes of T-profiles profile are silver RAL 9006 and black RAL 9005.

SPECIFICATION

Product:	TETRAL INVERSE on T-grid
Supply form:	unassembled / assembled panels
Material:	0,46 mm. th. aluminium
Section blade:	"Π" shape, base 15 mm, h.40 mm
Cell size:	...x... mm.
Panel size:	600x600 mm.
Finish:	inner blue RAL 5012/ outer silver RAL 9006 (or natural aluminium/ black RAL 9005).
Suspension:	to lay into standard T15 or T24 grid
Quantity:	... sq.m.

**CEIR**

Via Marconi, 3 - 35030 Caselle di Selvazzano - PD - Italy

tel. +39.049.630779 • fax +39.049.632254

www.ceir.com • e-mail: ceir@ceir.com